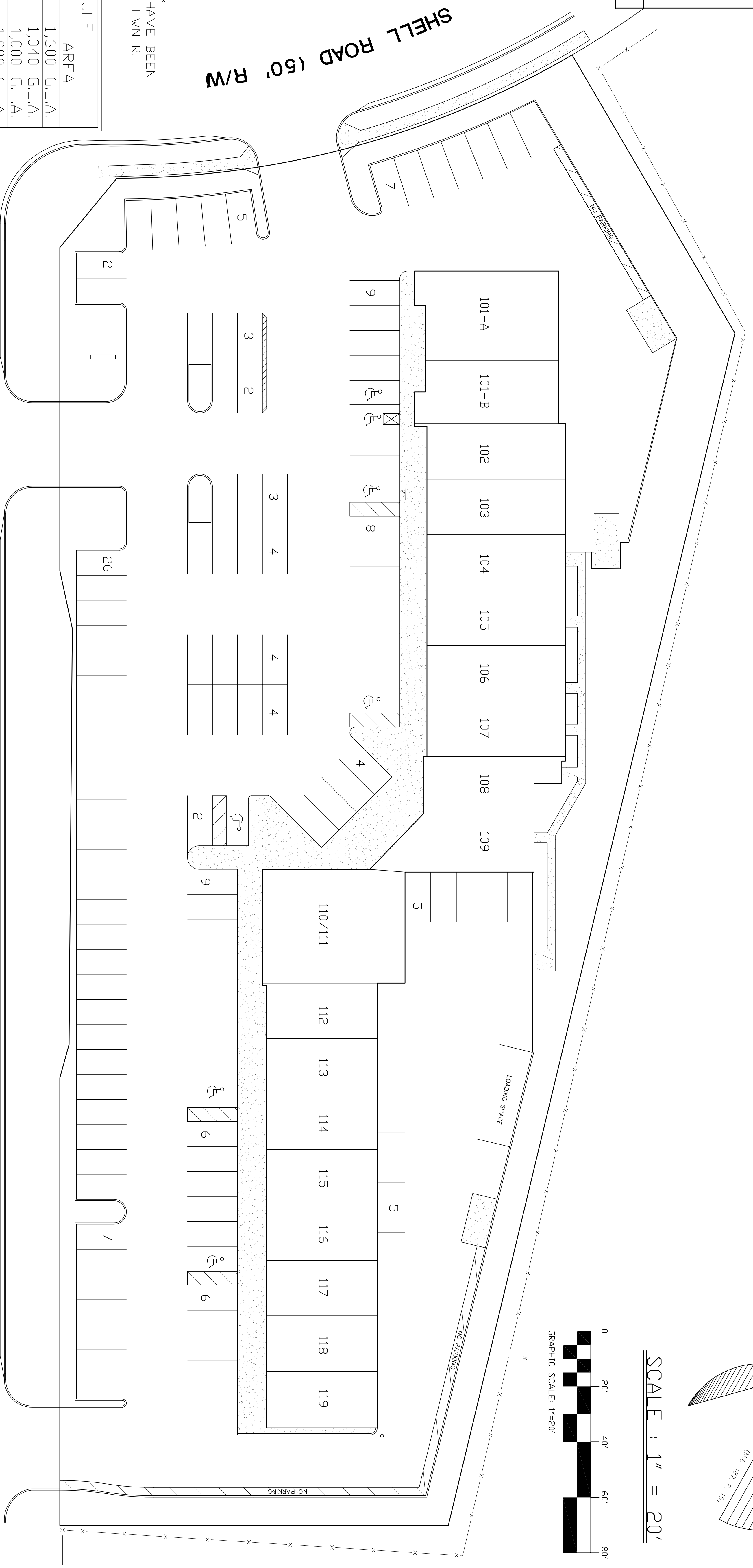


LOCATION MAP



NOTE:
BUILDING SCHEDULE AREAS &
DIMENSIONS SHOWN HEREON HAVE BEEN
PROVIDED BY THE PROPERTY OWNER.

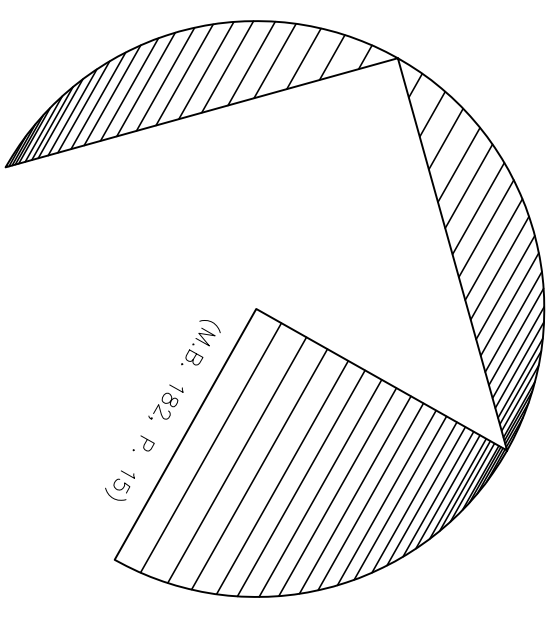
NO.	DIMENSIONS	AREA
101-A	32' X 50'	1,600 G.L.A.
101-B	22' X 50'	1,040 G.L.A.
102	20' X 50'	1,000 G.L.A.
103	20' X 50'	1,000 G.L.A.
104	20' X 50'	1,000 G.L.A.
105	20' X 50'	1,000 G.L.A.
106	20' X 50'	1,000 G.L.A.
107	20' X 50'	1,000 G.L.A.
108	20' X 40'	800 G.L.A.
109	20' X 50'	1,000 G.L.A.
110/111	40' X 50'	2,000 G.L.A.
112	20' X 40'	800 G.L.A.
113	20' X 40'	800 G.L.A.
114	20' X 40'	800 G.L.A.
115	20' X 40'	800 G.L.A.
116	20' X 40'	800 G.L.A.
117	40' X 40'	800 G.L.A.
118	20' X 40'	800 G.L.A.
119	40' X 40'	800 G.L.A.
TOTAL GROSS LEASE AREA		18,840 S.F.

DIAMOND SPRINGS ROAD (VARIABLE WIDTH R/W)
(M.B. 165, P. 44)

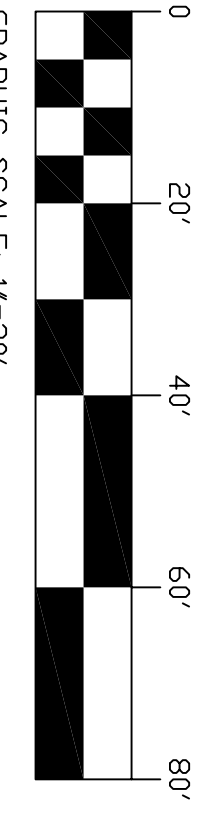
"DIAMOND SPRINGS SHOPPES"

MANAGED BY :
ROBERT BROWN & ASSOC. , INC.
757-461-0000 757-461-1630
OFFICE FAX

1270 DIAMOND SPRINGS ROAD
VIRGINIA BEACH, VIRGINIA 23455



SCALE : 1" = 20'



HASSELL & HOIKES, P.C.
ENGINEERS-SURVEYORS-PLANNERS
305 VILLAGE PARKWAY
CHESAPEAKE, VIRGINIA 23020
PHONE: (757) 547-9531 FAX: (757) 547-9481